



FORZA

WWW.4ZA.COM

4ZA OWNERS MANUAL

4ZA OWNERS MANUAL FOR SEATPOST

GENERAL

Read this manual carefully before using your 4ZA seatpost.

⚠️WARNING

Bicycle riding can be, and often is, extremely dangerous. Your 4ZA seatpost was designed and manufactured using state of the art technology and materials. It meets and exceeds the applicable EN-standard. Nevertheless, the poor condition of many of our roads, your speed on impact, dangerous climatic conditions, your weight and your dexterity as a rider are just a few of the factors which contribute to possible and even foreseeable impact energies well beyond your 4ZA seatpost's capabilities. No seatpost, including your 4ZA seatpost, can withstand ALL such foreseeable impacts.

CONTENTS

- Warnings
- Technical Information
- Parts and Tools
- Prepare Parts
- Installation
- Safety Checks
- Maintenance

⚠️WARNINGS

Read very carefully!

Keep this manual and all other documentation you received from 4ZA because they contain important information.

⚠️WARNING

No seatpost can withstand all foreseeable impacts. The ability of any seatpost, including your 4ZA seatpost, is limited.

⚠️WARNING

Replace your 4ZA seatpost after no more than three years. While the "useful life" of your 4ZA seatpost depends on its use and care, as a general rule, given the enormous stresses to which seatposts are regularly subjected, we strongly recommend that your 4ZA seatpost be replaced after no more than three years from its date of purchase. Should you decide to disregard our recommendation, remember that you are doing so at your own, exclusive risk!

⚠️WARNING

Your 4ZA seatpost is a high-tech product and must therefore be assembled only by a specialized mechanic using sophisticated, professional tools. DO NOT ATTEMPT TO ASSEMBLE YOUR 4ZA SEATPOST YOURSELF!

Should you decide to disregard our recommendation, please follow the assembling instructions featured in this owner's manual very carefully and remember that you are doing so at your own, exclusive risk.

⚠️WARNING

Your 4ZA seatpost can only be used for the following cycling applications: road racing, track racing, cyclocross, cross country mountainbike, triathlon, fitness.

⚠️WARNING

Make sure you thoroughly check every component of your bicycle paying particular attention to your 4ZA seatpost before each and every single use. Make sure there are no cracks or deformations. Should you find any, do not use your bicycle. Take it to a professional mechanic for any and all necessary repairs/replacements.

⚠️WARNING

Make sure you submit your 4ZA seatpost to regular check-ups by your mechanic. It has been our experience that a large majority of accidents could have easily been avoided by a preliminary examination by a professional mechanic.

⚠️WARNING

4ZA declines any and all responsibility for injuries and/or damages caused by the failure to scrupulously respect the instructions on torque values in tightening the bolts. Any different torque can and will affect the integrity of your 4ZA seatpost.

⚠️WARNING

Never dispose any of your 4ZA components in the environment. Seek the advice of your local waste collection officials.

TECHNICAL INFORMATION

Compatibility

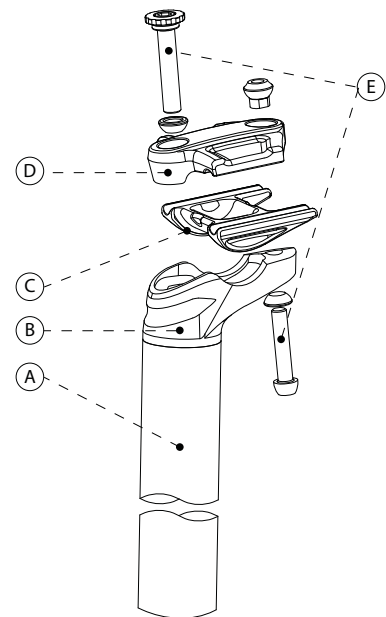
⚠️ Important! 4ZA seatposts are designed for use with aluminium and carbon frames and are available in a 27,2mm and 31,6mm tube diameter. Do not use a reduction sleeve to alter your 4ZA seatpost shaft diameter.

PARTS AND TOOLS

Familiarize yourself with the parts of your 4ZA seatpost and the tools required to assemble the seatpost.

Your 4ZA seatpost parts*

- A – Seatpost tube
- B – Seatpost head
- C – Bottom clamp
- D – Top clamp
- E – Clamp bolt(s) & washer(s)



*Your 4ZA seatpost may differ from the model shown.

Tools

- 4, 5, 6 mm Hex wrenches
- Torque wrench
- Friction paste
- Grease or titanium anti-seize for titanium bolts
- Isopropyl alcohol
- 400 grit sandpaper

PREPARE PARTS

Use isopropyl alcohol to clean the inside of your frames seat tube, 4ZA seatpost tube surface as well as the other 4ZA seatpost contact surfaces.

⚠ Important! Do not lubricate any of the surfaces.

⚠ Important! Remove any burrs from your 4ZA seatpost tube and the inside of the seat tube and smoothen it with 400 grit sandpaper.

INSTALLATION

Seatpost installation

Ensure that the outside diameter of the seatpost matches the inside diameter of the frame.

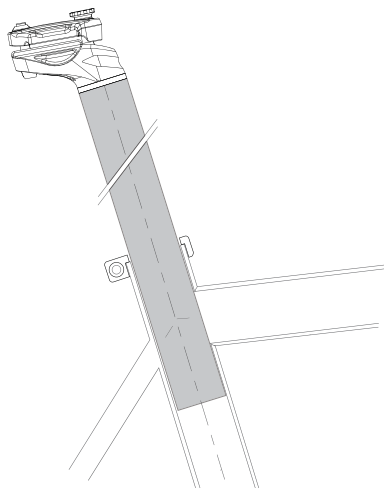
The maximum allowed tolerance between the inside of the seat tube and the seatpost tube is 0,05-0,15mm.

The seatpost should slide into the seat tube in a straight, smooth fashion.

Make sure that the seatpost clamp does not touch the seatpost tube during insertion and tightening. Only the bicycle seat tube should touch the seatpost.

Observe and apply the tightening torque of the seatpost clamp specified by the frame manufacturer.

⚠ Important! You MUST respect the minimum insertion mark on the seatpost. NEVER ride with the mark visible above the seat tube. The minimum insertion mark is printed on the seatpost.



On some bicycle frames the seat tube extends long above the frame's top tube. Be sure to insert your 4ZA seatpost so that the end of the seatpost tube sinks below the frame's top tube.

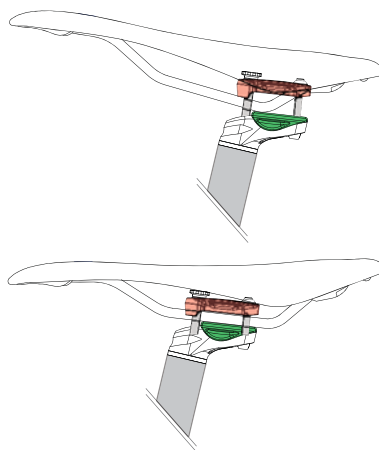
Saddle installation

To install the saddle, loosen the clamp bolts (E) until the saddle rail fits between the top clamp (D) and bottom clamp (C).

Work the top clamp onto the seat rails at the back of the saddle, and then slide the saddle into

position.

Adjust the saddle angle and slide the saddle to the desired position.



Use a torque wrench to tighten the clamp bolts. Tighten the clamp bolt(s), in increments of one full turn, in an alternating fashion.

- Single M7 bolt has a max. tightening torque of 11Nm (97,36 in-lb).
- 2 M6 bolts have a max. tightening torque of 8Nm (70,8 in-lb).

⚠ WARNING

Do not over tighten the seatpost and seatpost clamp bolt(s). Over tightening the bolt(s) could damage the saddle rail or seatpost tube and cause it to fail, which could lead to serious injury and/or death.

⚠ WARNING

Carbon seatpost: If the seatpost tube is carbon, you must apply friction paste to the contact surfaces. Friction paste is designed to create friction between the contact surfaces to prevent the seatpost from slipping without over-torquing the seatpost clamp bolts. Coat each contact surface of your 4ZA seatpost with a moderate amount of friction paste prior to installing. Failure to use friction paste could cause your seatpost to slip while riding which could lead to serious injury and/or death.

⚠ WARNING

When installing additional items, saddlebags, lights etc. please read the instruction manual provided by their respective manufacturers first.

SAFETY CHECK

Check that the seatpost does not slip in the seat tube and the saddle clamps are tightened properly. Pinch the rear wheel between your knees and twist the saddle. Your 4ZA seatpost should not twist separately from the frame.

MAINTENANCE

⚠ WARNING

Make sure you submit your 4ZA components - including, but not limited to, your 4ZA seatpost - to regular check-ups by your mechanic.

It has been our experience that a large majority of accidents could have easily been avoided by a preliminary examination by a professional mechanic.

Clean your 4ZA seatpost using only water and mild soap. Regularly inspect bolt torque. You should never ride with your 4ZA seatpost loose. Regularly inspect components for signs of damage or fatigue. Always inspect components for damage after any crash. Signs of damage or fatigue include, but are not limited to cracks, dents, deformation, discoloration, deep scratches, or audible creaking. Discontinue use and replace any parts that show signs of damage or fatigue. Do not attempt to repair parts. If you are unsure of the integrity of your 4ZA seatpost, have it inspected by your 4ZA dealer.

INFORMATION

Please note: 4ZA reserves the right to modify this owner's manual.

Such possible modifications will be listed on 4ZA's internet site (<http://www.4za.com>) and/or are available by contacting us at 4ZA and/or your authorized 4ZA retailer. Make sure you periodically check any one of these three sources of information for possible modifications to this owner's manual.